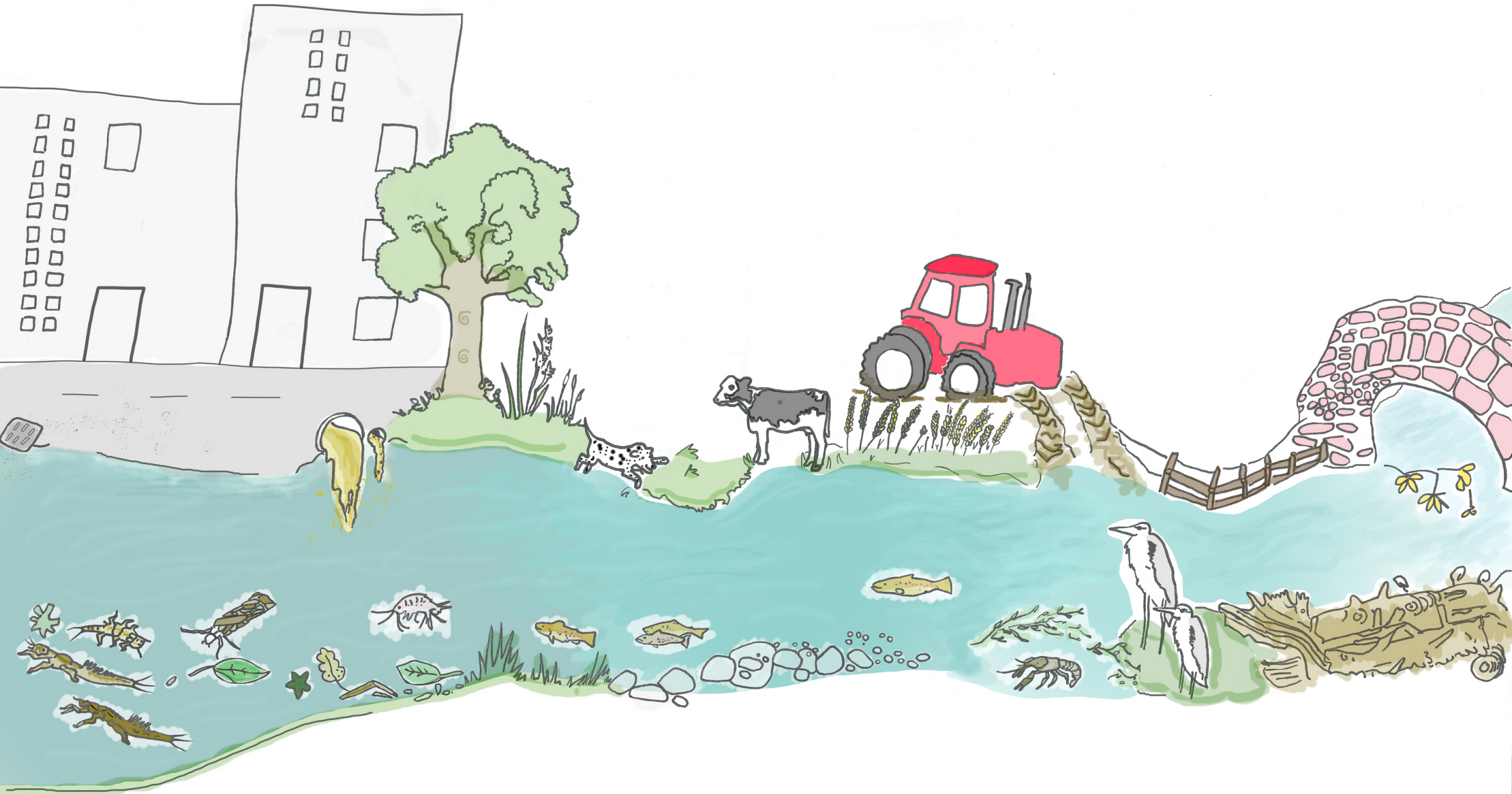
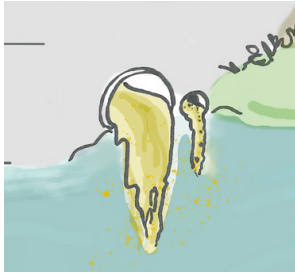


# How humans affect rivers

People affect rivers and the wildlife in them in many ways. How many ways can you think of?  
Use the picture below to help you, then see if there are any you missed.



## Sewage



Wastewater from toilets, bathrooms and kitchens is carried to sewage treatment works, which sometimes overflow so the wastewater ends up in rivers.

## Urban runoff



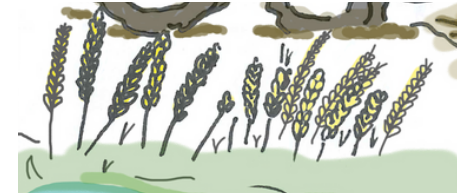
Urban places have a lot of hard surfaces, so rainwater doesn't soak into the ground and instead goes into drains and to the river, more quickly than it would in a natural place.

## Animal disturbance



Farmers keep livestock, which can mean manure goes into the river. Livestock and pets can disturb the habitat in the river.

## Pesticides



Chemicals sprayed onto crops to stop them from being eaten by insects can eventually end up in the river, affecting the wildlife there.

## Agricultural runoff



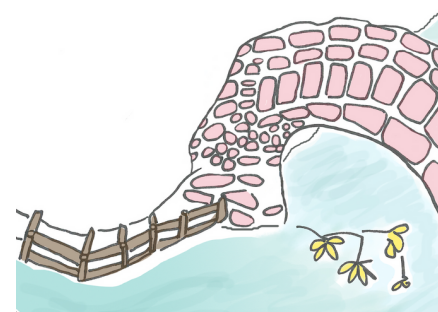
Rain and irrigation can wash soil, fertilisers, pesticides and manure off farmland into the river.

## Industrial waste



Rivers can be polluted with materials like plastics, metals and other chemicals from industrial sites.

## Bridges and other engineering



Humans affect the flow of rivers by building things like bridges and culverts, and modifying the river bank.

## Erosion



Rivers wear away the land more quickly in places where humans have removed trees and ploughed fields, as these make the soil less stable.